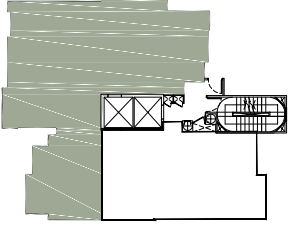
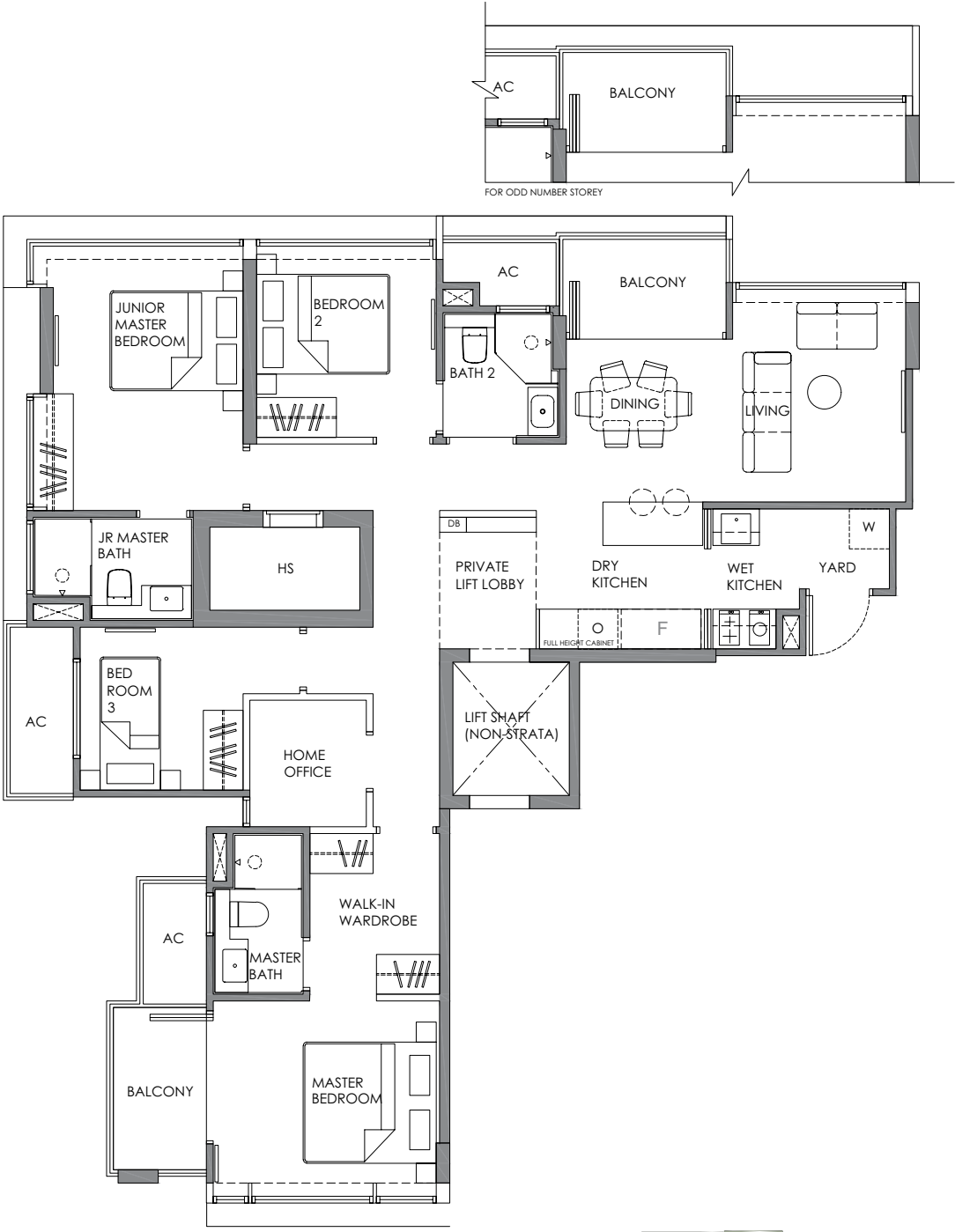


**TYPE C**  
**4 BEDROOM + HOME OFFICE**  
 TOTAL 4 UNITS - 12<sup>TH</sup> TO 15<sup>TH</sup> STOREY

#12-01/ #13-01/ #14-01/ #15-01

Strata area : 119 sqm / 1,281 sqft



Plans are not to scale and subject to any amendment as may be approved by relevant authorities. All areas are approximate and are subject to final survey.

HS = Household Shelter; DB = Distribution Board; AC = Air Con Ledge;  
 X = Void; Master Bath = Master Bathroom; Jr Master Bath = Junior Master Bathroom; Bath = Bathroom; Pwdr = Powder Room; F = Fridge; O = Oven;  
 W = Washing Machine Cum Dryer

